



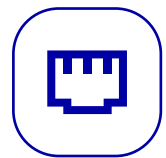
JILONG  
Since 1996

# OPM-22/22V

## Mini Optical Power Meter



Mini size



Network test



Measurement accuracy  $\pm 0.2$  dB



7 Wavelengths



Self-calibration



LED lighting



### Features Description

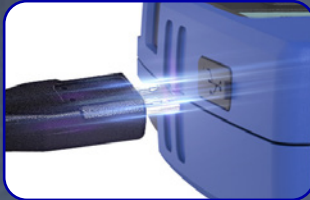
- Accurate measurement  $\pm 0.2$  dB
- Continuous use 60h (only in optical power meter mode)
- VFL with 10mW (Only for OPM-22V)
- Automatic wavelength memory, 7 wavelengths 850/980/1310/1490/1550/1625nm
- Pocket size
- Network test, judge signal transmission
- Universal adaptor for FC/SC/ST
- With LED lights for dark environment
- Lithium battery USB-charging/ AA Batteries (optional)

# Product Features



## LED light

Convenient for dark environment



## USB charging

Charging anytime, safe and stable



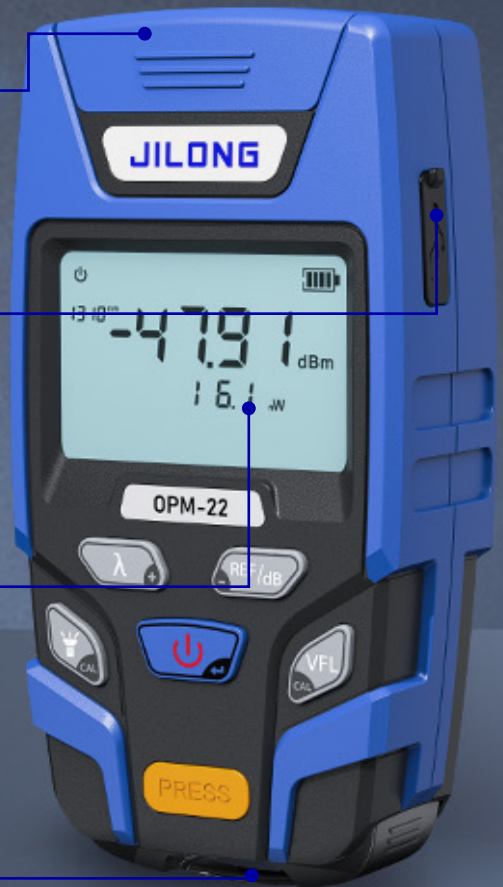
## Threshold setting and automatic judgment

Lower than the setting value, the screen will warning



## Network test

Accurate measurement, judge signal transmission



## 2.5mm Universal Connector



SC



ST



FC

## Calibration Steps



Press two keys at the same time, and the screen shows CRL, enter the calibration program



Increase and decrease the value



Press the key to save the calibration value



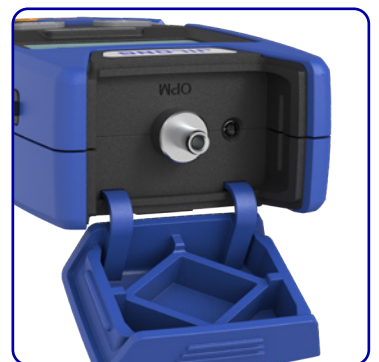
# Product Specification

Model	OPM-22	OPM-22V Multi-function all-in-one machine
VFL	--	10mw
Network test	Interface RJ-45	
Wavelength	800 ~ 1700 (nm)	
Detector type	InGaAs	
Connector	2.5mm Universal connector	
Power measurement range	-70 ~ +10 dBm / -50 ~ +26 dBm	
Uncertainty	$\leq \pm 0.25$ dB	
Linearity	$\leq \pm 0.1$ dB	
Standard wavelength	850/ 980/ 1300/ 1310/ 1490/ 1550/ 1625 (nm)	
Display resolution	0.05 DPI	
Operating temperature	-10 ~ +60 (°C)	
Storage temperature	-25 ~ +70 (°C)	
Auto-off time	10 min	
Operating hours	Battery power: 20 hours (only the optical power meter works)	
	Rechargeable: 60 hours (only the optical power meter works)	
LED	Support	
Power	Built-in rechargeable lithium battery 1000mAh / AAA 1.5V batteries x 2	
Charging port	USB (only for charging model)	
Dimensions	112 x 57 x 31 mm	
Weight	120 g (Including batteries)	

The above data were obtained by Jilong Laboratory in 20°C



# Product Display



## Contact us

**Nanjing Jilong Optical Communication Co., Ltd**

Address: 12F, Changfeng Technology Building 2, NO.14 Xinghuo Rd, Pukou District Nanjing, Jiangsu, 210032, China

Tel: +86 25 58880885

Mail: sales@jilongot.com

Web: www.JILONGOT.com



Focus on official website for more