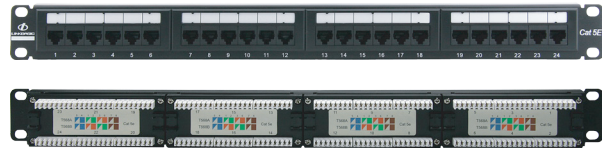


CAT5E 24-PORT PATCH PANEL

Part Number: PNA24-SC5E



Part Number: PND24-UC5E



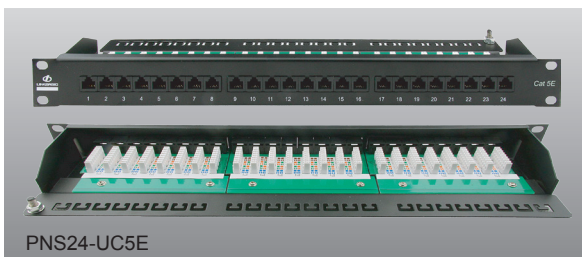
PRODUCT INTRODUCTION

The CAT5E patch panel is loaded with keystone jacks, which meet or exceed the transmission standard of CAT5E. The performance is beyond CAT5E 250 MHZ hardware connections standard and widely used in the horizontal cabling in equipment room and intermateable terminal.



PNS24-SC5E

CAT5E shielded keystone jack

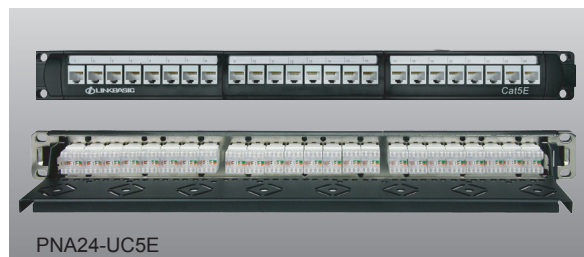


PNS24-UC5E

CAT5E unshielded patch panel

PRODUCT FEATURES

- Individual design with simple, compacted out looking.
- Available in T568A and T568B
- Contact: phosphor bronze with 6 to 50µgold plate assuring the 250 times insertion
- The termination protective cap at the back of the module with buckle lock type design, can guarantee the cable to avoid excessive bending after termination, or fall off and the protection of electric shock
- Fully compatible with RJ45 connector, suitable for CAT5E level or lower channel
- Contact insertion for 1500 times
- Strong and easy to install designed to reduce the cost of installation and operation
- Ergonomic free line design, easy to use
- Compatible with 19-inch equipment racks, cabinets and wall mount
- Symbol all the ports at front parts
- Cable management can effective to channel cable to the contact



PNA24-UC5E

CAT5E unshielded patch panel

ORDER INFORMATION

Part Number	Description	Standard Color	Inner box	Carton	Carton measurement (LxWxH)	Carton weight
PNS24-SC5E	CAT5E shielded patch panel	Black	1PCS	5PCS	53cm*31cm*23cm	9.20KG
PNA24-SC5E	CAT5E shielded patch panel	Black	1PCS	10PCS	53cm*31cm*23cm	5.60KG
PND24-UC5E	CAT5E unshielded patch panel	Black	1PCS	10PCS	53cm*31cm*23cm	3.80KG
PNA24-UC5E	CAT5E unshielded patch panel	Black	1PCS	10PCS	53cm*31cm*23cm	4.20KG
PNS24-UC5E	CAT5E unshielded patch panel	Black	1PCS	5PCS	53cm*31cm*23cm	8.50KG