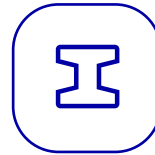




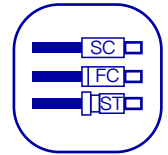
JILONG  
Since 1996

# VFL-22P

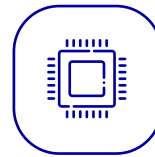
## Pen Type Visual Fault Locator



Metal  
material



2.5mm Universal  
interface



Upmarket chip  
strong light source



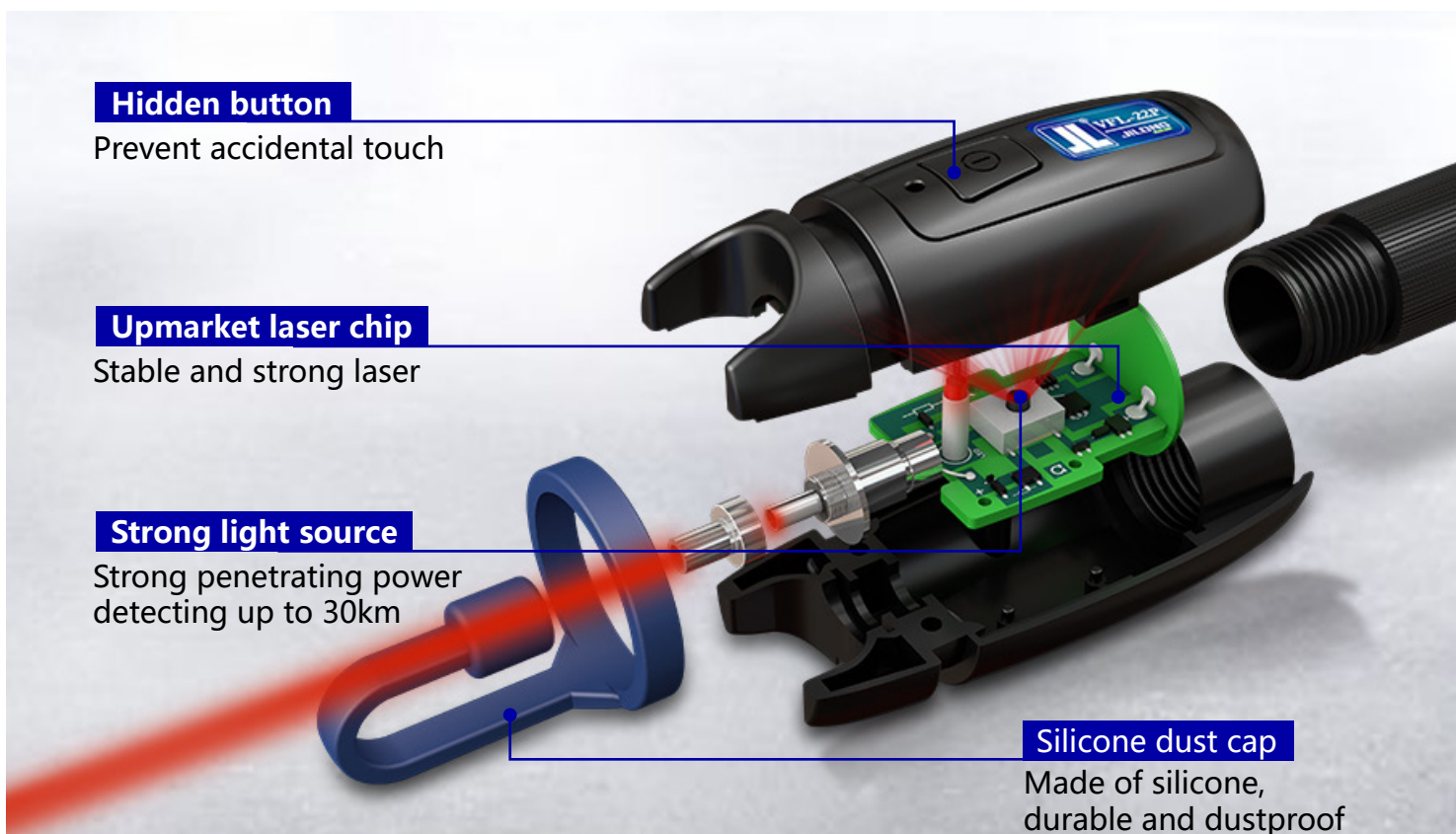
Pulsed and CW  
operation



### Features Description

- 40h continuous work
- 2.5mm universal adaptor for FC/ SC/ ST
- Measuring up to 30km, high stability
- High quality laser chip, strong light source
- Silicone dust cap
- Metal material, small and practical

# Product Features



## 2.5mm Universal Connector



## Product Parameter

Model	VFL-22P-10	VFL-22P-20	VFL-22P-30
Output power	10mW	20mW	30mW
Detection distance	8-10km	15-20km	25-30km
Operating hours	12H	10H	4H
Wavelength	650nm		
Laser type	LD		
Modulation frequency	CW / 2Hz		
Operating temperature	-20 ~ +60 (°C)		
Power	AA batteries x 2		
Dimensions	197 x 30 (mm)		
Weight	115g (Including batteries)		

The above data were obtained by Jilong Laboratory in 20°C



# Product Display



## Contact us

**Nanjing Jilong Optical Communication Co., Ltd**

Address: 12F, Changfeng Technology Building 2, NO.14  
Xinghuo Rd, Pukou District Nanjing, Jiangsu, 210032, China

Tel: +86 25 58880885

Mail: [info@jilongot.com](mailto:info@jilongot.com)

Web: [www.JILONGOT.com](http://www.JILONGOT.com)



Focus on official  
website for more